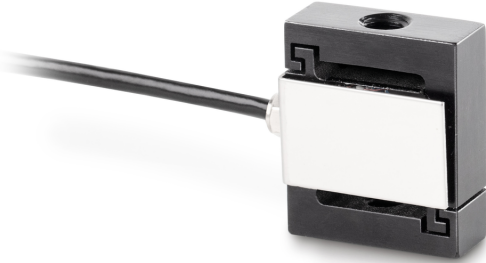


KERN CS 2-Y1

KERN

Miniature "S"-load/force measuring cell made of stainless steel



Construction

Design	"S" shaped cell
Material	stainless steel
Cable length	2 m
Mounting - force application	Threaded hole M3
Mounting - force dissipation	Threaded hole M3

Functions

IP protection - complete device	IP65
---------------------------------	------

Environmental conditions

Use temperature [Min]	-30 °C
Use temperature [Max]	70 °C

Packing & Shipping

Readability force [d] (N)	1 d
Dimensions packaging (W×D×H)	150×105×40 mm
Net weight	0,03 kg
Shipping method	Parcel service
Net weight approx.	0,05 kg
Gross weight approx.	0,10 kg
Shipping weight	0,1 kg

Services (optional)

Article number for DAkkS calibration (tensile force)	963-161V
Article number for DAkkS calibration (compressive force)	963-261V
Article number for DAkkS calibration (tensile force/ compressive force)	963-361V

Pictograms

STANDARD



OPTION



Category

Brand	Sauter
Product category	Measuring cell
Product group	Load/force measuring cell
Product family	CS Y1

Measuring System

Weighing capacity [Max]	2 kg
Load cell connection	4-wire
Load cell - characteristic value - nominal	2 mV/V
Load cell - Combined error	0,05%
Measuring applications	force mass
Load cell - Input resistance - nominal	385 Ω
Load cell - Output resistance - nominal	350 Ω
Load cell - Isolation resistance - [Min]	2000 MΩ
Load cell - Recommended excitation voltage [Min]	5 V
Load cell - Recommended excitation voltage [Max]	10 V
Load cell - Input resistance - variance	3 Ω
Load cell - Output resistance - variance	3 Ω
Measuring range force [Max] (N)	20 N
Directions of force	tension compression

Approval

CE mark	✓
---------	---